

VANDALPROOF METAL CABINET LOUDSPEAKERS

SENTRY6/STC

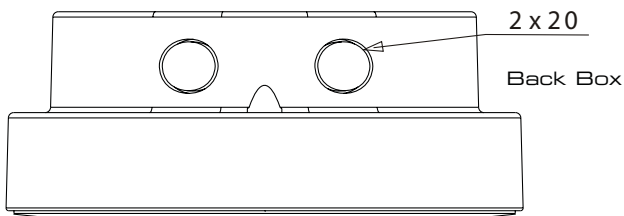


INSTALLATION INSTRUCTIONS

STEP 1

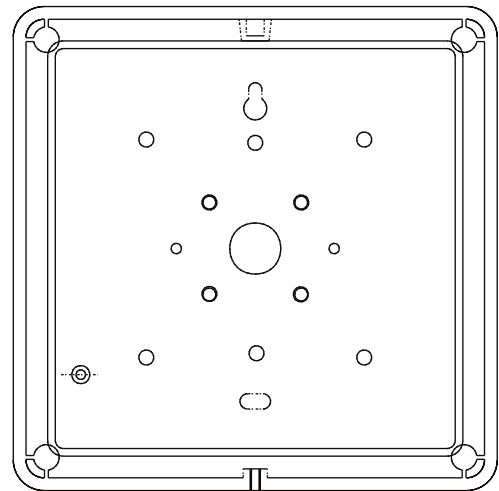
You can cable this unit via either the cable hole in the back of the unit or by using the 20mm cable entries at the top of the back box. Secure the back box to a flat surface using the fixing holes provided.

Top View



unit: mm

Rear View



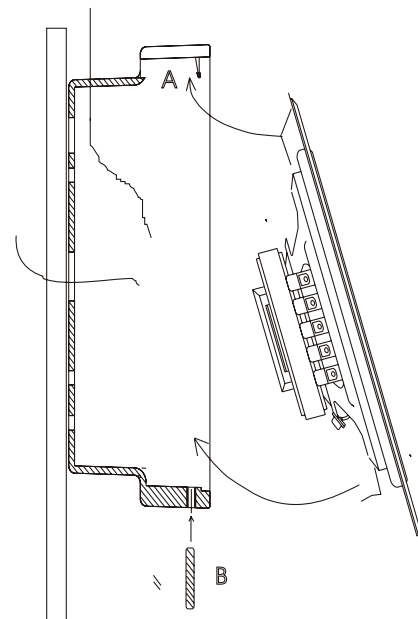
STEP 2

Once you have brought the cable through the back box terminate to the ceramic block and select the required power setting, See circuit diagram.

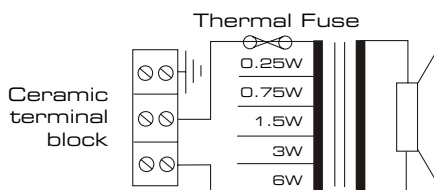
STEP 3

Slot the speaker plate under the retaining lug "A" and locate speaker into the back box. Tighten the grub screw "B" to secure the unit in place.

Side View



SENTRY6/STC Circuit diagram 100V Common



Penton UK Ltd

Unit 2 Teville Industrials | Dominion Way | Worthing | West Sussex | BN14 8NW
T: +44 (0)1903 215315 | F: +44(0)1903 215415 | E: sales@pentonuk.co.uk

www.pentonuk.co.uk

NOVEMBER 2011



RoHS

