

# ABS SPHERICAL LOUDSPEAKERS

ZCL0504-095

- ▶ **GB 15T/EN**
- ▶ **GB 15T/ENC**

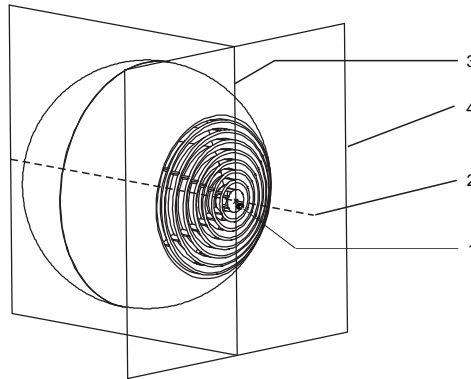


## INSTALLATION INSTRUCTIONS

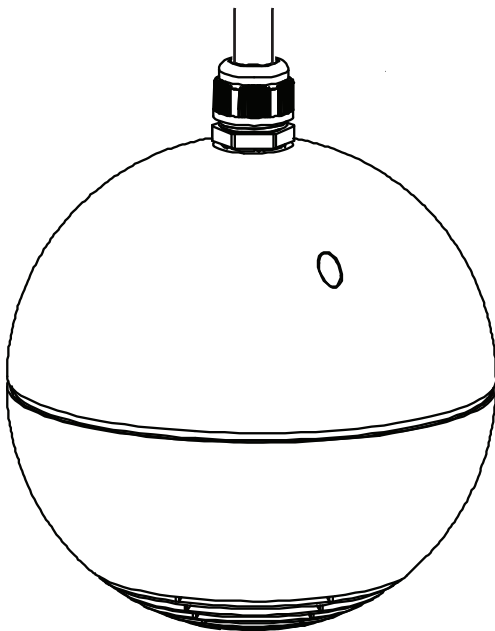
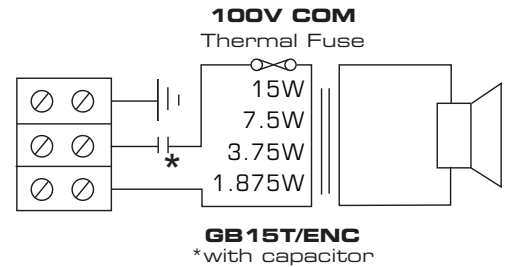
EN54-24:2008

Certificate No: 0359-CPR-00290 TYPE B

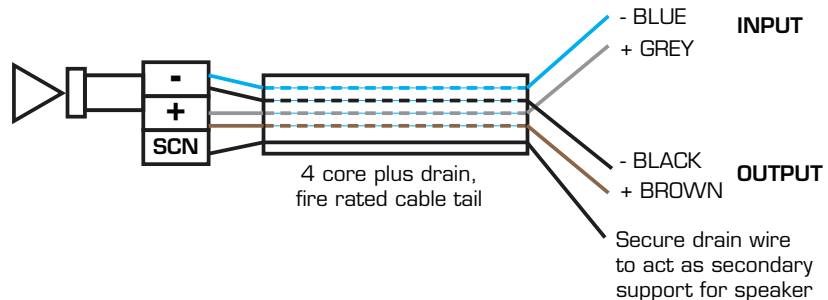
1. LOUDSPEAKER ENCLOSURE
2. REFERENCE AXIS
3. REFERENCE PLANE
4. HORIZONTAL PLANE



## CIRCUIT DIAGRAM



- 1 The GB15T/EN & ENC is a pendent speaker and is suspended via its connecting cable. The speaker is not supplied with a cable tail. We recommend using a 4 core plus drain wire, fire rated cable so that the speaker circuit can be looped in and out of the speaker bringing the speaker line monitoring all the way to the speaker.
- 2 Remove the lower half of the speaker by removing the screws then separate the speaker into two halves. The speaker terminations and cable gland will now be exposed for connection of the speaker cable. Please use the above circuit diagram for connection details and tapping selection.
- 3 We recommend that you fit a cable tail of the required length to the GB15T/EN & ENC. Use a junction box (not supplied) to terminate the cable tail via a suitable cable gland. The cable must be terminated at the junction box using ceramic terminals or terminals rated to a minimum of 600 degrees C or suitable to meet local fire standards. The cable tail must have a drain wire which needs to be secured in the junction box as this acts as a secondary support for the speaker.
- 4 See recommended connection details below:



### Penton UK Ltd

Unit 2 Teville Industrials | Dominion Way | Worthing | West Sussex | BN14 8NW  
 T: +44 (0)1903 215315 | F: +44(0)1903 215415 | E: sales@pentonuk.co.uk

[www.pentonuk.co.uk](http://www.pentonuk.co.uk)

JANUARY 2017



RoHS

